

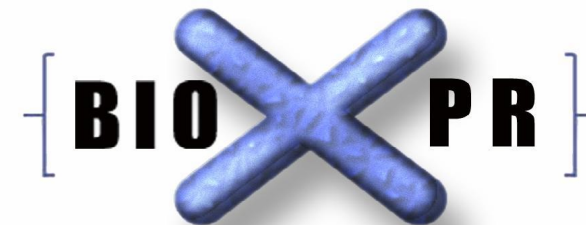


BioXpr

Services and Software  
in Bioinformatics

Bio-Entrepreneur 2009 Forum  
Paris, March 12 2009

Jean-Luc Henrioul  
Bus.Dvpt and Sales and Marketing Director



Computer science  
&  
Biotechnology



*« An evolutive multi-formats and multi-sources platform for the collection and the treatment of information to assist the decision-making process in Life-Sciences R&D »*

## *Background and Financing history*

- *2003: Company creation with own capital*
- *2003: First « Seed » financing: Start-IT (Private Invest), Euro 70K*
- *June 2008: Second round of financing: Euro 600K*
  - *Current ownership:*
    - *2 co-founders*
    - *Start-IT*
    - *SF Investment (Private Invest)*
    - *Segip (Private Invest)*
    - *Preface (Public Invest)*
- *March 2009: Loan from Sofinex (Walloon Region)*

DNA Sequence



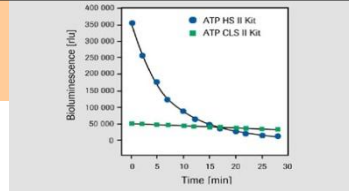
Protein Sequence

**Your Data**

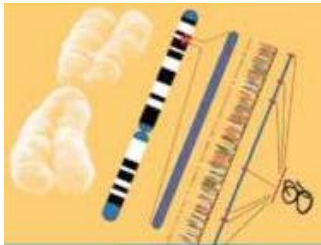
```

'ADSPQKVGGAALSKEFQVAHQVPMLSLDNAFSEE
STDELTFCCEPKLDGLAVSIYRDGVLVQAAATRGDGF
VPLKLRGDPYKPELVRGEVFMDSAGFDKLNTEAEKI
GSLRQLDSKITAKRPLMFYAYSTGLVADGNIPEDHYQ
PETKLVGEPKAAALAYYRDILTRRELKYEIDGVMKIQG
R'APRWAIAYKPPAQEEITQLLDVDFQVGRGAIPTVAI
VATLHNSDEVARLGKVGDTVIRRAGDVIPIQTQVLI
TTCPICDSHVEKVEGEAVARCTGGGLVCPAQRKQAIKI
IDKIVDQLVDRELKTPADLFLKQGHFESLERMGPKS
STTI AKFI YSI GIRFAGFATAONI ANHFI TI FNVNNA
    
```

Analysis signal



Genome annotation



**BioXpr's expertise**

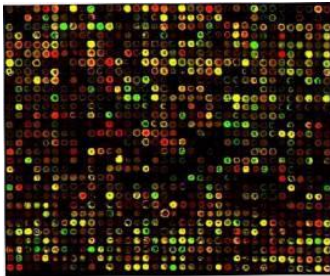
Embedded soft.



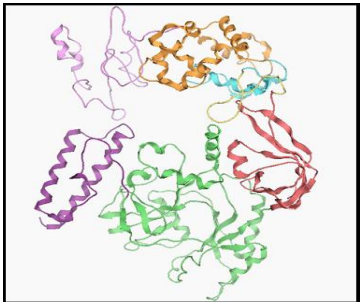
Information systems

City	Contact Name	Address
Dava	Jane Pomeroy	101 Sydney Ln
Dublin	Liz Wang	25 Grouchy Park Rd.
Lisbon	Isabel de Castro	Esplanada de Belem n. 30
Lisbon	Luís Rodrigues	Jardim das rosas n. 32
London	Victoria Ashworth	1 Aubrey Court
	Christina	South House

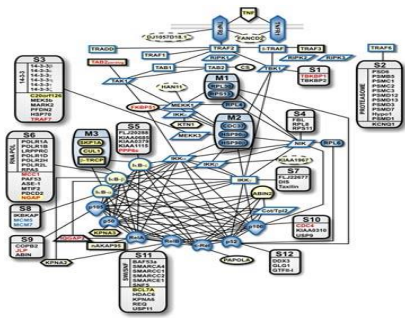
DNA Chips



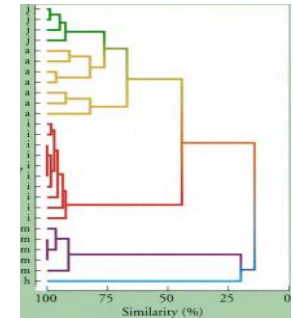
Protein Structure/function



Pathways/interactome



Clinical trials



## *Key succes factors from the bio-entrepreneur point of view.*

- *2 open-minded and ambitious founders with complementary skill sets*
- *Right balance of public and private financing sources*
  - *for capitalization,*
  - *for R&D, (EU FP6, BioWin,...)*
  - *for recruitment (First Enterprise,...)*
- *Market and Industry driven company*
  - *Early Industrial « Proof of Concept »*
- *Relevant Business Model: Fee for services, then products*
- *Recruitment policy and staff profile*

***BioXpr s.a.***

***Rue du Séminaire, 22***

***5000 – Namur (Belgium)***

***Tel : +32 (0)81 72 51 55***

***Fax : +32 (0)81 72 51 28***

***E-mail :***

***[jeanluc.henrioul@bioxpr.be](mailto:jeanluc.henrioul@bioxpr.be)***

***[Website : www.bioxpr.com](http://www.bioxpr.com)***